

Big Hole Watershed Committee

SUMMER 2021 NEWSLETTER

Seeking Understanding & Consensus
Creating Long-term Solutions
for the Big Hole River Watershed
Since 1995



P.O. Box 21
Divide, Montana 59727
406-960-4855
bhwc.org

Hang on to Your Hats!

Well folks, there's no way around it — it is going to be a tough year for water in the Big Hole. But while some things like climate and rain are out of our control, there is ample good will and the social infrastructure to ride this year out while building resilience into our watershed and our organization. We've been here before. If you live, work or recreate in the Big Hole, or just think it's an awesome place worth conserving, join us! As a wise board member of ours put it, "Conservation is as much about our community as it is about our land and water."



There are plenty of ways to engage and plenty of reasons to celebrate. In May, we received a prestigious award for our French Creek project (page 6). With our watershed health intern, we are pioneering the process to de-list an entire basin for sediment impairment (page 2). We've baked in long-term partnerships with agencies for mine waste cleanup (page 9) and launched a partnership program for local businesses and their customers to invest directly into our projects (pages 4,5).

Because of our tremendously capable staff, I've been able to zoom out and work on mapping our accomplishments (page 8) and charting a path forward for each sub-watershed in the basin (page 8). Where we can improve the landscape's ability to provide cold and abundant water, we will. Always in partnership, always for the resource!

Pedro Marques
Executive Director, Big Hole Watershed Committee



Big Hole Watershed Committee

Our Governing Board:

Randy Smith
Chairman, Rancher
Jim Hagenbarth
Vice Chair, Rancher
Steve Luebeck
Treasurer, Sportsman
Roy Morris
Secretary, George Grant
Trout Unlimited

Dave Ashcraft
Rancher, Business Owner
Sierra Harris
The Nature Conservancy
Peter Frick
Rancher
Jim Dennehy
BSB Cty. Water Utility
Hans Humbert
Rancher
Liz Jones
Rancher
Mark Kambich
Rancher
Erik Kalsta
Rancher
Dean Peterson
Rancher
Phil Ralston
Rancher
John Reinhardt
Rancher
Ray Weaver
Rancher
Bill Kempf
Guiding/Outfitting
John Jackson
BVHD Cty. Commission
Andy Suenram
Resident
Eric Thorson
Guiding/Outfitting
Paul Cleary
Resident
Mark Raffety
Rancher
Brian Wheeler
Big Hole River Foundation

Our Staff:

Pedro Marques
Executive Director
Tana Nulph
Associate Director
Ben LaPorte
Program Manager
Chet Robertson
UBH Range Rider
Johnathan Costa
Wildlife Program Tech.
Max Hanson
Watershed Health Intern
(volunteer)

Our Focus Areas:

- Fish & Water
- Wildlife & Uplands
- People

Member Spotlight: Max Hanson, BHWC Intern

Getting to Know our Members

Our "Member Spotlight" features key board members, partners, and supporters of the BHWC and highlights their commitment to conservation and the Big Hole watershed. This edition features Max Hanson, Watershed Health Intern and UM Graduate Student.

1. How long have you been a member of, or participating with, the BHWC? *"As a graduate student at the University of Montana, I started working with BHWC in the early months of 2021. So just recently. Initially, I worked with Pedro to structure some conversations with Big Hole landowners about BHWC's restoration efforts, and I'm now helping collect some stream data in the French Creek watershed in hopes of helping BHWC get that drainage de-listed from DEQ's list of impaired water bodies."*



2. Why did you join BHWC and what is your role with the committee? *"I began working with BHWC because I was interested in the committee's ecological restoration efforts, primarily those in the Anaconda Uplands. The work they are doing up there just kind of blew my mind a little bit, and I wanted to be some small part of*

"I want to thank BHWC for giving me a chance to work with you all. The experience so far has been so valuable for me and I appreciate all of your support."

helping the landscape recover from decades of smelter dust."

3. What work of BHWC do you find the most important and/or of greatest interest to you? *"As I started to work with the committee and talk to various members, I began to gain an appreciation for the understanding and awareness of the resource within the community that BHWC's collaborative efforts have expanded. Talking to members has showed me the power of the collaborative process and what it can do for a community when implemented over long periods."*

4. What do you like most about the Big Hole watershed? *"I just love how beautiful that Big Hole valley is. Driving along 43, it's hard to keep my eyes on the road. It's just such a cool, unique place. I also think it's pretty special to have the last remaining distinct population segment of alluvial Arctic grayling in the lower 48."*

Thanks, Max! We think so too! And we appreciate the work you're doing to support BHWC!



Grants, Grants, Grants!

Our 2021 Funders

1. High Stakes Foundation
2. Cinnabar Foundation
3. MT Trout Foundation
4. George Grant Trout Unlimited
5. Montana Watershed Coordination Council
6. Vital Ground Fndn.
7. Beaverhead County United Way
8. Montana Department of Environmental Quality
9. Montana Department of Natural Resources and Conservation
10. Montana Fish, Wildlife and Parks
11. Natural Resource Damage Program
12. Bureau of Reclamation
13. Natural Resources Conservation Service



Watch our Films on YouTube

Search "Big Hole Watershed Committee"

Activities & Events

See You at the Grange Hall!

BHWC Meeting In Person Once Again

After over a year of cancelled and virtual meetings, we are so thrilled to be meeting in-person again at the Divide Grange Hall! Our meetings are held the 3rd Wednesday of each month except July and December. Meetings are always open to the public and include committee updates, time for discussion, coffee & snacks, and special topic presentations. Please join us!

Our in-person meetings can also now be joined by Zoom thanks to Southern Montana Telephone Company, who donated the internet service for the Grange Hall. Thanks, SMTC!

For more information on our monthly meetings (including Zoom links), visit bhwc.org/monthly-meetings.

Upcoming Meetings

BHWC does not meet in July.

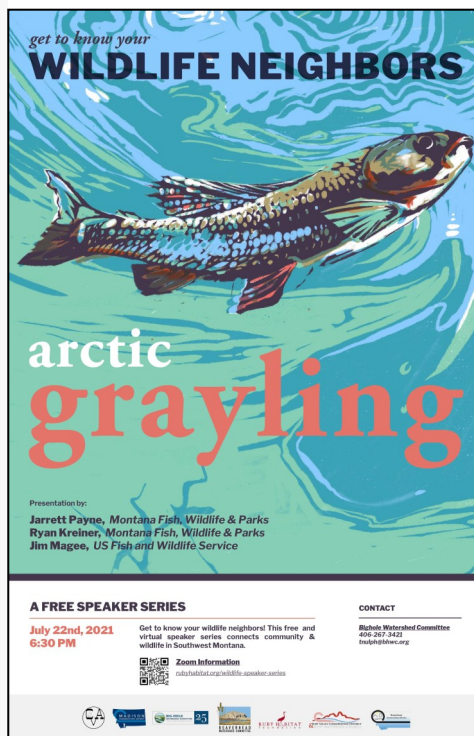
August 18, 2021 — 7:00 pm
at the Divide Grange + Zoom
Topic: Conifer Encroachment

September 15, 2021 — 7:00 pm
at the Divide Grange + Zoom
Topic: Big Hole Wildlife Update

October 20, 2021 — 7:00 pm
at the Divide Grange + Zoom
Topic: TBA

The Wildlife Speaker Series is Back

Join Us July 22nd to Learn About Grayling (on Zoom)



BHWC and partners are excited to bring back the Wildlife Speaker Series this year in a virtual format after having to cancel the series in 2020 due to COVID-19. By next year we should be meeting in-person again at ranches, lodges, and community buildings throughout Southwest Montana!

BHWC is hosting the July event, this year which features our most iconic species, Arctic grayling! We can't wait to hear from the experts: Jim Magee, USFWS; Jarrett Payne, MFWP; and Ryan Kreiner, MFWP. Please join us July 22nd at 6:30 pm on [Zoom](https://zoom.us)!

Visit bhwc.org for more information, Zoom instructions, and registration (event is free). Donations to support the series can be made to the [Ruby Habitat Foundation](http://RubyHabitatFoundation.org).

Partners in the 2021 series include BHWC, Beaverhead CD/Watershed, Ruby Valley CD/Watershed, Centennial Valley Association, Madison CD, and the Ruby Habitat Foundation.

GIVE BACK TO THE RIVER

We've made it easy for your business and customers to invest in the Big Hole River.



Partner businesses add a voluntary 1% fee to their prices, which is donated to the Big Hole Conservation Fund. We will match every dollar and put them to work in conservation and restoration projects.

The next generation deserves a healthy river.

We all Use the River, Let's All Invest in It

Same Great Cause, New Ways to Give

We all love the Big Hole River. If you don't, you probably haven't floated it, fished it, or camped on its banks (yet). Maybe you haven't seen sandhill cranes dotting the fields or elk herds crossing Highway 43 as you drive through the Big Hole Valley. Maybe you're not watching the river gages anxiously, knowing that your business and livelihood depend on having enough water to grow hay or take clients fishing. You must not be familiar with the majestic, snow-capped Pioneer and Pintler Mountains.

We bet most of you know exactly what we're talking about though. If not, we encourage you to visit our beautiful watershed! We understand shared sacrifice, slowing down for cattle, praying for rain, supporting our community, and literally "making hay while the sun shines". **The Big Hole River is the lifeblood of our community and economy. Give today to conserve our resources for years to come.**

BHWC offers a variety of ways to get involved, including one-time, monthly, and round-up donations. You can also donate livestock when you go to auction or send us a check in the mail. Donations can be targeted to the program or project of your choosing or to the area of greatest need.

We recommend monthly giving, as it can have a greater impact for the Big Hole River over time than a one-time donation that may be forgotten next year. If you can't give financially right now, could you donate your time at our monthly meetings or our volunteer events? However you contribute, thank you for being a part of conservation in the Big Hole watershed.

Your contributions are tax deductible and can be targeted to specific projects.

How to Donate

- Donate online by pointing your phone's camera at this QR code or by visiting bhwc.org.
- Donate by mail using the envelope provided.



Give Monthly

Already have an account? [Login](#)

One-Time **Monthly** Round-Ups

\$

25

✕

Choose a Campaign:

Area of Greatest Need ▾

☐ I'd like to give in honor/memory

☐ Add a donation note/comment

Donate \$25 /month

⚡ Powered by Harness

What Is a Round-Up Donation?

Here's an example:

- You buy a cup of coffee for \$2.40 on your connected credit/debit card
- Harness "Rounds Up" the purchase to the next dollar amount (\$3.00)
- The change (\$0.60) is the Round Up
- Round-Ups accumulate over the month; the total is donated/charged to your card on the last day of the month.

You can make a major difference with just your spare change!

Big Hole Watershed Committee

Building Drought Resilience in the Big Hole

Summer 2021 Streamflow, Snowpack & Climate Forecast

From Matt Norberg, Montana Department of Natural Resources and Conservation

Streamflow: Streamflows in the Big Hole River have generally been below to well below average since the start of April. The bulk of the snowpack has melted off and the river peaked earlier and lower than normal. Daily average flows for this time of year are well below normal levels with most of the gages reporting streamflows well below the 25th percentile with some even below the 10th percentile.

Snowpack/Precipitation: Snowpack in the Big Hole is well below normal at 14% of median. The only SNOTEL site with SWE is Darkhorse Lakes at approximately 3.1" (6/15/2021), normal SWE for Darkhorse on 6/15/2021 is 16.90". Comparable years as of now are early 2000's. Precipitation YTD in the Big Hole is also below average at 84%. May and June are typically the wettest months of the year, but except for the storm in mid-May, the Big Hole watershed has seen dry conditions this spring.

Forecast: With the transition to neutral ENSO conditions, the forecast persists in Montana for above average temperatures and below average precipitation. Water shortages are expected to persist throughout the summer unless we get timely precipitation events from Mother Nature.

From NRCS: "Water users in the Jefferson River basin should be aware that streamflows are expected to be below to well below normal for the May – July period. The current 50 percent exceedance forecasts are around 70% of average for the Big Hole, 80% of average for the Boulder, 60% of average for the Ruby, and around 50% of average at the downstream mainstem points (Jefferson nr Twin Bridges and Jefferson nr Three Forks). Of particular concern in this region are the forecasts for the Beaverhead; water users in this basin should be prepared for well below normal runoff for the remainder of this season. Forecasts for the two main storage facilities in this basin, Lima and Clark Canyon Reservoirs, are extremely low and water managers should plan accordingly."

Hydrologist Supports BHWC with Data, Sweet Data

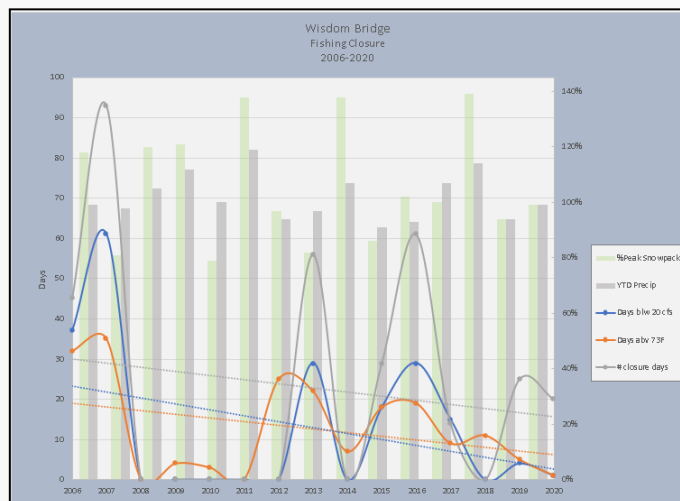
DNRC Studies Closure Trends, Releases New Stream Gage Web App

BHWC is fortunate to work closely with Matt Norberg, DNRC. Matt provides regular streamflow, snowpack, and climate reports at our monthly meetings. Matt is a knowledgeable and dedicated hydrologist, and we are lucky to have him supporting our organization and watershed!

Matt compiled long-term streamflow, temperature, and closure data for the Big Hole River at Wisdom, which shows that while precipitation (gray bars) has generally declined in the past 15 years, there have been fewer fishing closures (gray line) due to either water temperature (orange) or flows (blue). **The difference has been voluntary conservation measures!**

Matt is also DNRC's Stream Gage Program Manager, and he recently shared the news of their new stream gage web app, StAGE. From DNRC: "DNRC's Water Management Bureau is pleased to introduce a new Web Application called StAGE (Stream and Gage Explorer). This mobile-friendly interactive web app allows you to access real-time streamflow data collected by DNRC stream gages, along with seasonal gage data, historic data from prior watershed studies, DNRC State Water Projects stream and canal data, as well as links to USGS data across Montana. You can check it out at <https://gis.dnrc.mt.gov/apps/StAGE/>."

For questions or more information, please contact Matt Norberg, DNRC Water Resources, at (406) 444-6041.



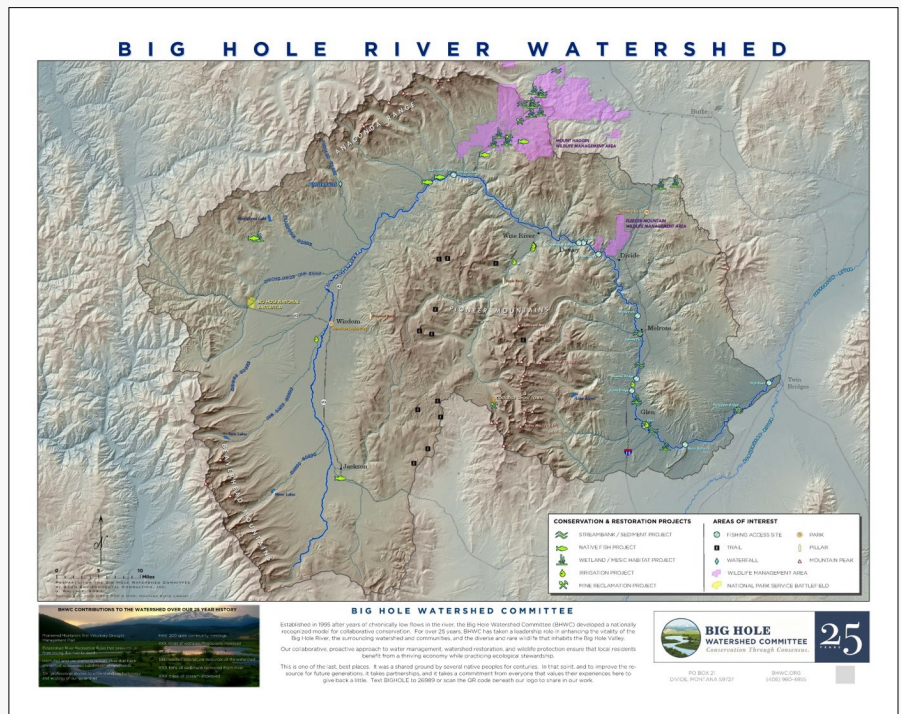
Building Drought Resilience in the Big Hole

Help Make the Map!

Developing Detailed Watershed Maps with Your Input

BHWC has secured funding from the Bureau of Reclamation and United Way of Beaverhead County to develop Big Hole River maps to be made available at local businesses and posted at Fishing Access Sites. Designed by Geum Environmental, the maps will include information on past project locations, trails and fishing accesses, and other points of interest in the Big Hole watershed. It will also include background information on our organization and Drought Management Plan.

This is the draft map. Have a favorite creek or peak you want to see on there? Send suggestions to pmarques@bhwc.org.

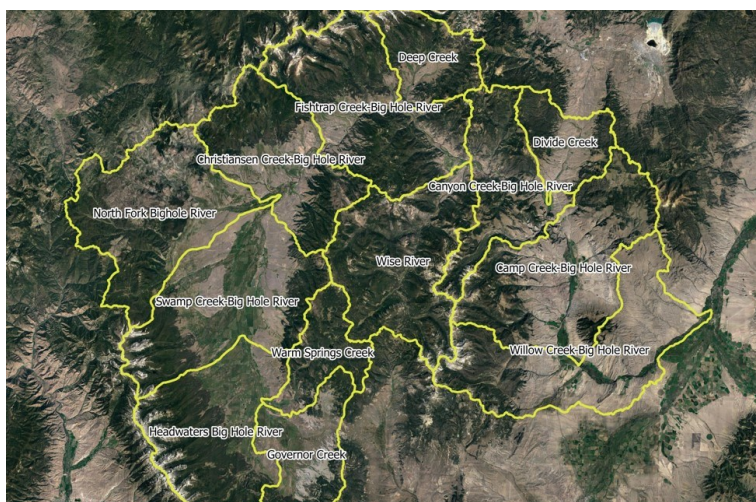


Breaking It All Down

Planning for the Future at the Sub-watershed Scale

This year and next we will be updating our Watershed Restoration Plans (WRPs) with funding from the Bureau of Reclamation. We will be consolidating our two existing WRPs into one document, organized at the sub-watershed scale based on the State's 10th level Hydrologic Unit Code (HUC). The 13 sub-watersheds in the Big Hole are listed and shown below.

If you have any information related to conservation needs in these sub-watersheds, please reach out to us! Contact Ben LaPorte, BHWC Program Manager: blaporte@bhwc.org or 303-808-5611.



Big Hole HUC-10 Sub-watersheds

- Governor Creek
- Warm Springs Creek
- Headwaters Big Hole River
- Swamp Creek
- North Fork Big Hole River
- Christiansen Creek
- Fishtrap Creek
- Deep Creek
- Wise River
- Canyon Creek
- Divide Creek
- Camp Creek
- Willow Creek

Big Hole Watershed Committee

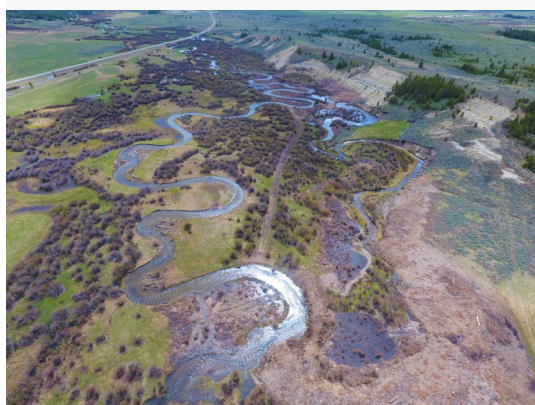
Fish & Water

Excellent!!!

Lower French Creek Project Wins Award

We are thrilled to announce that our Lower French Creek project won the "2021 Award of Excellence in Riparian Management" from the American Fisheries Society: Western Division! This project constructed 4,000 linear feet of new stream channel, preventing 800+ tons of sediment PER YEAR from entering the stream and eventually flowing into the Big Hole River. Learn more about the project, here:

<https://bhwc.org/project/lower-french-creek/>.



Thank you to our project partners, funders, and contractors, including MFWP, BoR, DEQ, GGTU, MTU, TNC, WCS, Morrison-Maierle, Watershed Consulting, and Basic Biological Services.



"This award is the culmination of strong partnerships, years of fundraising, dedication, and a ton of elbow grease! This project deserves every bit of recognition and I am proud to have been a part of it." - Ben LaPorte, BHWC Program Manager

The Bridges of Madison County

Phase I Complete, More Work to Be Done at Pennington Bridge

Phase I of our Pennington Bridge restoration project was completed March 2021. Contractors Rowe Excavation removed approximately 3,500 cubic yards of sand and gravel from a point bar opposite the landowner's terribly erosive bank. Madison County utilized the excavated material for road improvements on Giem Lane, a county road close to the project site. The new and widened channel will alleviate bank stress on the opposite bank, improve water quality and aquatic habitat, and reduce the risk of a channel avulsion that would flank the Pennington bridge and downstream infrastructure.

Phase 2 of the project is now underway and will be a more comprehensive approach to reducing the risk to infrastructure and the resource from high flow events. With grant funds from the Bureau of Reclamation's WaterSMART program, BHWC hired Great West Engineering and Applied Geomorphology to design a long-term solution. BHWC will actively engage landowners in the lower section of the Big Hole and work with Madison County to co-develop a solution that provides water reliability, safety to infrastructure and private property, and improved ecological function.

Thanks to our project partners, funders, and contractors, including Madison County, MFW, MWCC, BoR, Rowe Excavation, Great West Engineering, Applied Geomorphology, and landowners.

Want to support this critical infrastructure project? Send us a check marked "Pennington Bridge" or donate online at bhwc.org.



Fish & Water

Save the Brown Trout

MFWP Proposed Fishing Restrictions for Struggling Brown Trout

The brown trout is the main recreation fish in the Blue-Ribbon Big Hole River, and for unknown reasons, their numbers are dwindling.

BHWC is concerned about the low fish counts MFWP is reporting in the Big Hole this year. The steady decline of brown trout in the last 5 years, as shown by MFWP data, is supported by anecdotal evidence shared by fishing guides and local residents.

MFWP is holding a public comment period on the issue ending July 11th. BHWC will be considering proposed management actions and their impacts on our resource and economy and will be submitting public comment to MFWP. We encourage individuals to read up on the issue and also submit their comments.



Save the Date: August 13th

BHWC Volunteer Restoration Day

Please join BHWC Friday, August 13th, to build low-tech, "Zeedyk-style" rock structures to hold back water and repair damage to a meadow on the terrace above French Creek. We will meet along the Dry Creek road in the morning. More details will be published soon.

Did you know that wet meadows and riparian areas provide critically important habitat for many species? Functioning mesic areas capture and store water in the soil, slowly releasing it after runoff events and ensuring continued base flows throughout the growing season. Holding water in the soil later into the summer also results in plant communities that are more productive, providing important food and cover for insects, wildlife, and livestock.

Unfortunately, many of the mesic areas in our watershed are degraded and in desperate need of repair. Sign up for our email newsletter at bhwc.org to stay hear about events and volunteer opportunities. RSVP to Ben LaPorte, Prog. Mgr.: blaporte@bhwc.org or 303-808-5611.

Upcoming: What's Next for Elkhorn?

Elkhorn Mine & Mill Water Quality Improvement Project Continues

A century of underground hard rock mining and milling has resulted in degraded in-stream fish habitat, water quality impairments, and hazards to public health and safety. BHWC has been coordinating a team of experts and the US Forest Service to characterize the site and sources of acid mine drainage (AMD) and provide data-driven information needed for restoration planning.

The goal of the 2020 work was to investigate the extent of the ongoing contamination and ways to stop and/or slow this toxic water from entering Elkhorn Creek. This year, we will continue our water quality monitoring by characterizing the contaminated soils, sediments, and materials in the vicinity of the Elkhorn Creek and the old mill. We will also complete a cultural resource study of the area for permitting purposes.

Results will lead to the development of a preliminary soils excavation and removal design. This second phase of planning is essential for the eventual remediation and restoration of the Elkhorn site to safe and ecologically functional conditions.

Project partners, funders, and contractors include: USFS Northern Region Office, USFS Beaverhead-Deerlodge National Forest, Montana Technological University, MFWP, MDEQ, and Winden Water LLC.



Big Hole Watershed Committee

Wildlife & Uplands

Collaborating to Reduce Wildlife Conflict

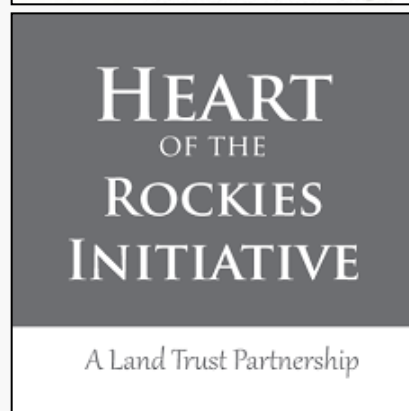
NRCS Grant Funds Wildlife Programs, Regional Study

BHWC is part of a coalition of livestock producers, tribes, nonprofits, and landowner groups from Montana to New Mexico that was recently awarded a federal grant of nearly \$1 million to reduce conflicts between people and predators — especially grizzly bears and wolves.

The \$894,000 Conservation Innovation Grant (CIG) is funded by the NRCS and coordinated by Western Landowners Alliance and the Heart of the Rockies Initiative. Half of the 20 groups in the coalition are located in Montana. The grant provides three years of funding with one primary goal: to scale up conflict reduction efforts. The coalition will work to increase adoption of the most effective non-lethal wildlife conflict reduction practices, including electric fencing, range riding, and carcass removal. It will also develop knowledge-sharing resources and work with NRCS to determine eligibility for dedicated conservation cost-share funding for these practices.

BHWC will receive \$18,000 over three years for participation in the study as well as operation of our livestock conflict reduction programs, including range riding and carcass composting. As always, we will keep all individual livestock producer information confidential throughout our participation in this project.

Livestock producers who would like to be involved in the study and/or knowledge-sharing conversations via Zoom can contact tnulph@bhwc.org.



Test our Tools, Borrow our Books!

Offering Loss Prevention Tools to Local Ranchers

BHWC has a variety of livestock loss prevention and bear safety tools for local livestock producers and residents to try out. Funded by the Montana Livestock Loss Board and the Vital Ground Foundation, our toolkits are intended to help protect vulnerable livestock from carnivores like wolves and bears.

Our tools currently include:

- **Scare devices** (Foxlights, CritterGitter motion-activated alarms, air-horns, etc.)
- **Books about** wolves, bears, livestock protection dogs, tracks and scat, and wildlife conflict reduction
- **Temporary electric fencing**
- **Game cameras**
- **AND MORE.**

Toolkits developed with help from People and Carnivores. Any or all of the tools are available to borrow or test. Contact Tana Nulph, BHWC Associate Director, at 406-267-3421 or tnulph@bhwc.org.



Wildlife & Uplands

If You Leave Them, They Will Come

Removing Carcasses in the Big Hole and Sage Creek to Reduce Depredation

Our 6th season providing carcass removal to Big Hole Valley ranchers ended May 31, 2021. BHWVC employs a technician to pick up livestock carcasses with a dump truck on loan from Red Rock Lakes NWR each spring during calving and lambing to remove predator attractant from local ranches with the goal of reducing livestock depredation.

The service is provided for free, but donations are accepted. To learn more or make a donation, visit bhwc.org or text "carcass" to 26989. New in 2021: magnets (right)!

2021 Season Summary:

- 46 carcasses from 11 livestock producers
 - * 28 adult cows
 - * 18 calves

BHWC also partners with the Centennial Valley Association to provide carcass removal to Sage Creek ranchers each spring. Sage Creek carcasses are hauled to the Beaverhead County Landfill. CVA reimburses BHWC for the service. Thanks, CVA, for your partnership!



Livestock Carcass Removal & Composting

PICK-UP: 209-628-2225 INFO: 406-267-3421



REDUCE PREDATOR CONFLICT

COMPOST YOUR CARCASSES

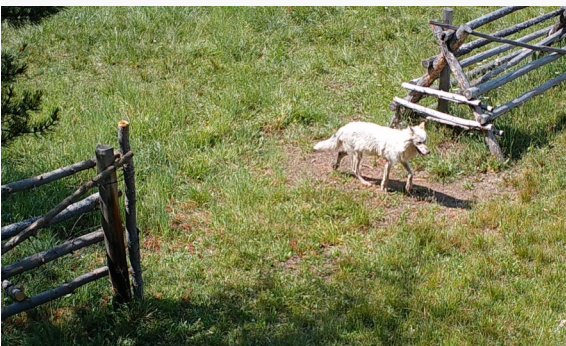
Service free to Big Hole Valley Ranchers March-May; donations accepted.
More info: bhwc.org or text 'carcass' to 26989

Partners & Funders: Livestock Loss Board, MDT, NFWF, NRCS, WLA, People and Carnivores, USFWS, HoTR, MDEQ, Vital Ground Foundation, and local ranchers.

Back on the Range Again

Rider Prepares for 11th Season, Reflects on Over a Decade of Monitoring

BHWC Range Rider, Chet Robertson, is eagerly gearing up for another season monitoring grazing allotments on the Beaverhead-Deerlodge National Forest. Chet patrols six grazing allotments for seven livestock producers each summer monitoring for predator activity and injured livestock to reduce depredation and help ranchers secure reimbursement for their losses. With the large number of coyotes, wolves, and black bears in the Big Hole watershed—and more grizzly bear sightings confirmed each year—protecting livestock from predators is an ever-present challenge for local ranchers.



New in 2021, BHWC is participating in the NRCS's CIG research projects studying range riding and carcass programs. The rider program will be partially funded by the 3-year CIG grant (more on page 10).

Chet has been riding the range in the upper Big Hole for BHWC since 2011. In that time, he has seen countless wolf and bear tracks, had a head-on encounter with a live wolf, helped MFWP collar a wolf, identified carcasses for reimbursement, learned to ID wolf kills from USDA Wildlife Services, visited with campers and hunters, and

built peace of mind for enrolled livestock producers.

Thank you to our funders and partners over the years: Livestock Loss Board, Cinnabar Foundation, NFWF, Vital Ground Foundation, Alongside Wildlife Foundation, People and Carnivores, WCS, MFWP, Defenders of Wildlife, NRCS, Wildlife Services, and local ranchers.

Big Hole Watershed Committee
P.O. Box 21
Divide, MT 59727

**Non Profit
Organization
US Postage
PAID
Permit #16
Butte, MT**

Return Service Requested

SUMMER 2021 NEWSLETTER



**BIG HOLE
WATERSHED COMMITTEE**
Conservation Through Consensus.

**Big Hole Watershed
Committee**
P.O. Box 21
Divide, Montana 59727
Phone: 406-960-4855
E-mail: info@bhwc.org



/bigholewatershed



/bigholewc



/bigholewatershed

Conservation Through Consensus Since 1995

Mission: To seek understanding and agreement among individuals and groups with diverse viewpoints on water use and management in the Big Hole River watershed of Southwest Montana.

Established in 1995, the Big Hole Watershed Committee (BHWC) is a collaborative organization representing diverse regional interests, including ranchers, sportsmen, conservationists, tourists, and community members. For two decades, BHWC has taken a leadership role in enhancing the vitality of the Big Hole River, the surrounding watershed and communities, and the diverse and rare wildlife that inhabits the Big Hole Valley. The Big Hole River is the lifeblood for the surrounding area's natural and agricultural legacies, and the foundation for the region's economy. By proactively working to conserve this precious resource, BHWC is enriching one of Montana's last, best places for local residents and visitors from around the world.

BHWC is a consensus-driven, multi-stakeholder entity that works closely with other conservation organizations as well as local, State, and Federal agencies on watershed restoration and management plans.

The Big Hole Watershed Committee is a non-profit, tax-exempt charitable organization under Section 501(c)3 of the Internal Revenue Code. Donations are tax deductible as allowable by law. *Our tax identification number is 11-3737644.*

Donate online!
Visit bhwc.org and click
the "Donate" button.