



Big Hole Watershed Committee

Monthly Meeting Minutes

September 21st, 2022 – 7:00 pm at the Divide Grange
Zoom option also provided

In Attendance

In-person: Pedro Marques, BHWC; Tana Nulph, BHWC; Ben LaPorte, BHWC; Tom Bowler, Resident; Betty Bowler, Resident; John Reinhardt, Rancher/BHWC; Jim Tolton; Clayton Elliott, Montana Trout Unlimited; Ron Breitmeyer, MBMG; Jenna Dohman, MBMG; Ann Hanson, MBMG; Eric Thorson, Sunrise Fly Shop/BHWC; Jim Hagenbarth, Rancher/BHWC; Jim Dennehy, BSB Water/BHWC; and Diane Hutton, Resident/BHWC.

Zoom: Roy Morris, GGTU/BHWC; Paul Siddoway, sportsman; and Matt Lacey.

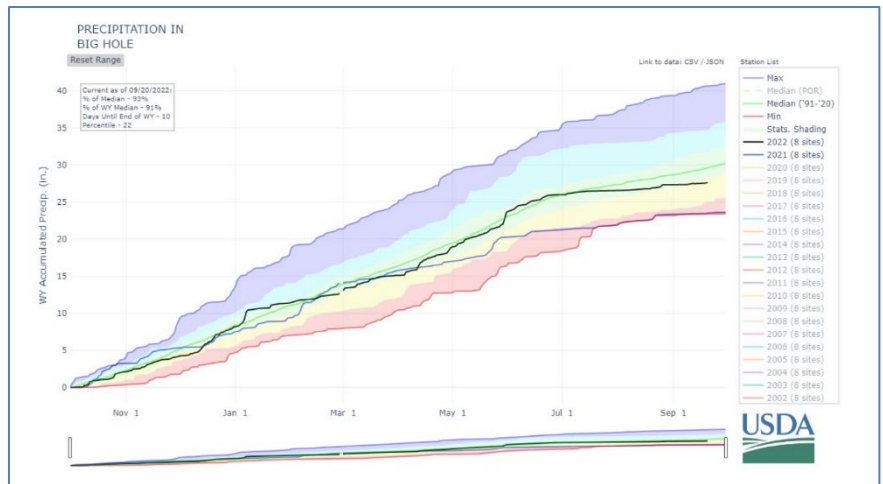
Meeting Minutes

BHWC monthly meetings are held at the Divide Grange with a virtual (Zoom) option provided thanks to Southern Montana Telephone Company, who donated the internet service. Meeting minutes and recordings are available at <https://bhwc.org/monthly-meetings/> (scroll down for meeting minutes archive). Printed copies are available during in-person meetings. Contact Tana Nulph, BHWC Associate Director, at tnulph@bhwc.org or (406) 267-3421 to suggest additions or corrections.

Reports

Streamflow and Snowpack Report – Matt Norberg, Department of Natural Resources and Conservation

- **Streamflows:** Streamflows in the Big Hole River watershed are still below to well below average for this time of year. Declining evapotranspiration, irrigation shutdowns, and cooler/shorter days are starting to bring up flows, but again we are still below the normal for this time of year. Lack of precipitation over the last couple of months coupled with warm air temperatures have taken a toll on streamflows during the last half of the summer months.
- **Precipitation:** Precipitation in the Big Hole is currently 93% of the median. The Water Year ends on September 30th, with 9 days remaining. Precipitation since the beginning of July has been flat which is one of the main reasons for below average stream flows

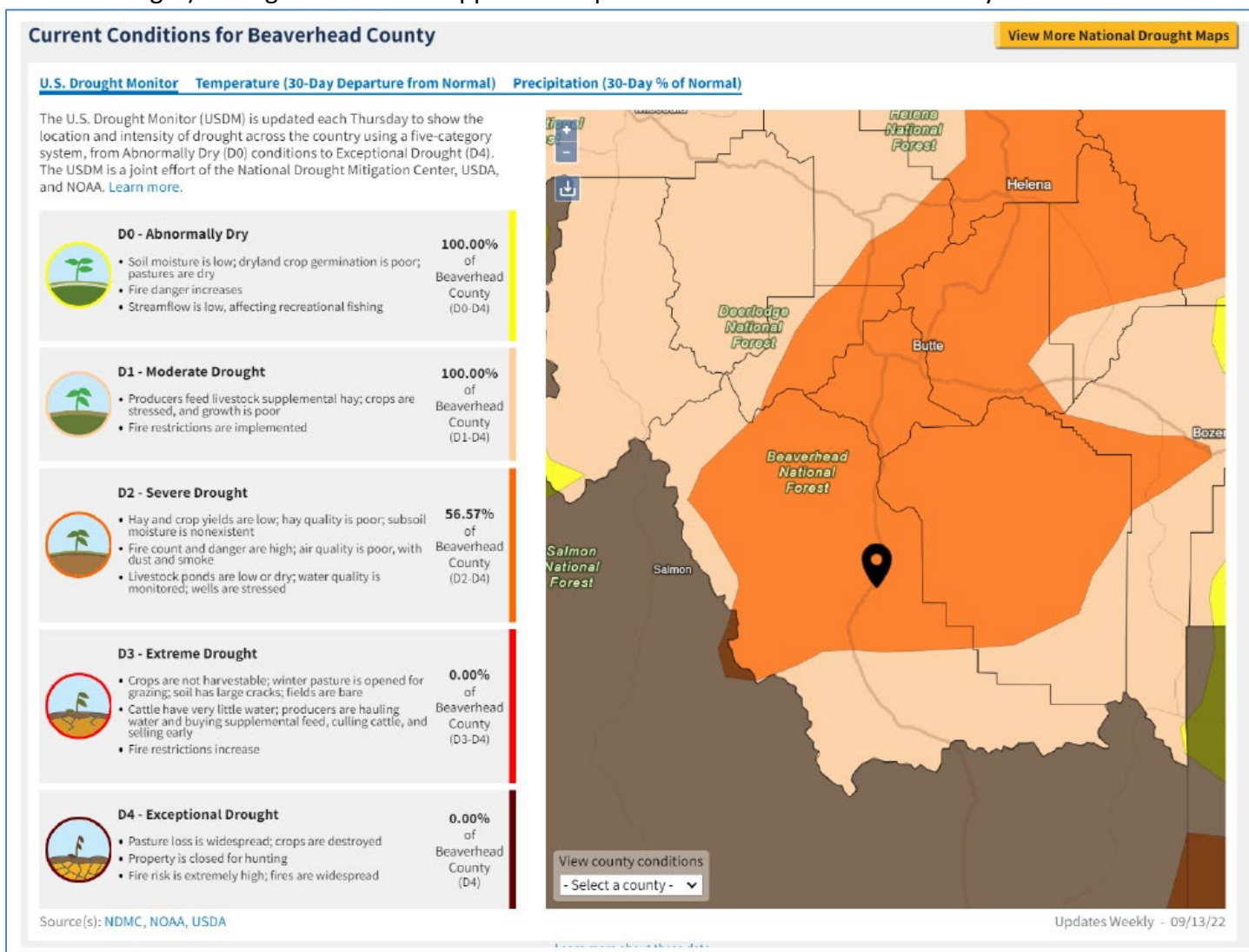


later in the summer. Timing and intensity of precipitation has a direct impact on soil and streamflow conditions.

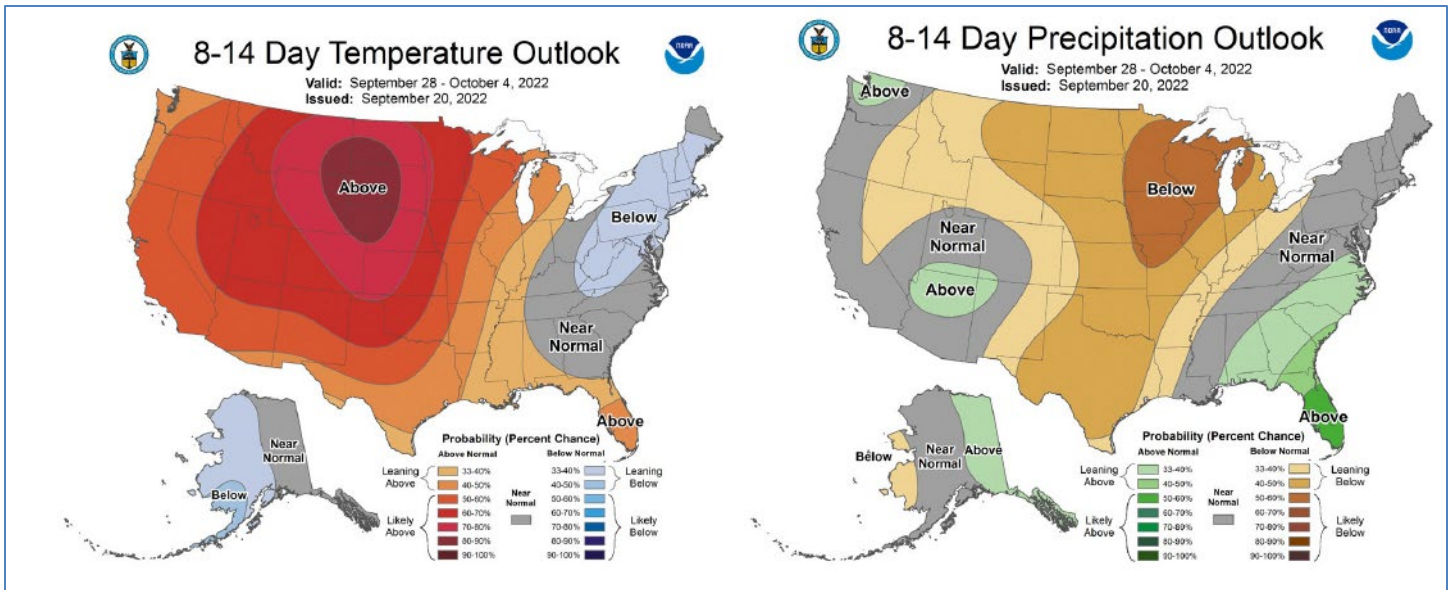
Station Number	Station name	Date/Time	Gage height, feet	Dis-charge, ft ³ /s	Long-term median flow 5/18	Temperature, water, deg C
■ UPPER MISSOURI RIVER BASIN						
06024450	Big Hole River bl Big Lake Cr at Wisdom MT	09/20 12:45 MDT	1.75	10.8	36.0	12.4
06024540	Big Hole River bl Mudd Cr nr Wisdom MT	09/20 13:30 MDT	2.67	15.4	122	--
06024580	Big Hole River near Wise River MT	09/20 12:45 MDT	--	--	---	12.5
06025250	Big Hole River at Maiden Rock nr Divide MT	09/20 12:45 MDT	2.67	219	323	14.0
06025500	Big Hole River near Melrose MT	09/20 13:15 MDT	1.29	227	317	14.1
06026210	Big Hole River near Glen MT	09/20 13:30 MDT	2.18	225	317	15.5
06026420	Big Hole R bl Hamilton Ditch nr Twin Bridges, MT	09/20 12:30 MDT	0.500	126	210	13.9

Station Code	Station Name	Basin	Last Measured	Last Discharge ft ³ /s	Last Stage ft.	Last Temp °C
41D 01000	Big Hole River abv Jackson, MT	Upper Missouri Basin	9/20/2022, 12:45 PM	14.21	0.82	10.54
41D 02000	Big Hole River abv Spring Cr nr Jackson, MT	Upper Missouri Basin	9/20/2022, 12:45 PM	12.72	1.34	11.58
41D 05000	Big Hole River at Miner Creek nr Jackson, MT	Upper Missouri Basin	9/20/2022, 12:45 PM	22.73	0.77	13.62
41D 08000	Big Hole River near Wise River, MT	Upper Missouri Basin	9/20/2022, 12:45 PM	112.23	2.42	12.50

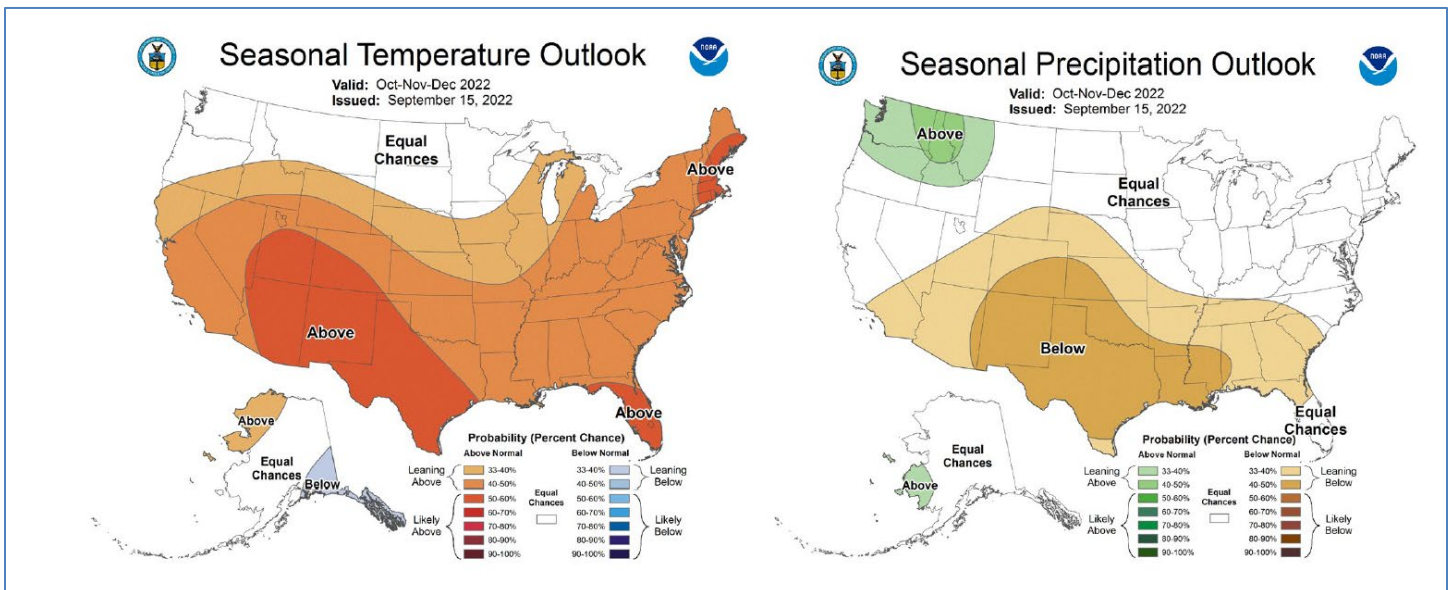
- **Drought Status:** The Big Hole Drought Status ranges from D1 (Moderate Drought) to D2 (Severe Drought). Drought Conditions slipped in the past months due to the hot and dry weather.



- **Outlook:** The 8-14 day outlook predicts above average temperatures and slightly below average precipitation. We are expected to receive some rain showers and thunderstorms this week, but after that its back to warm and dry conditions.

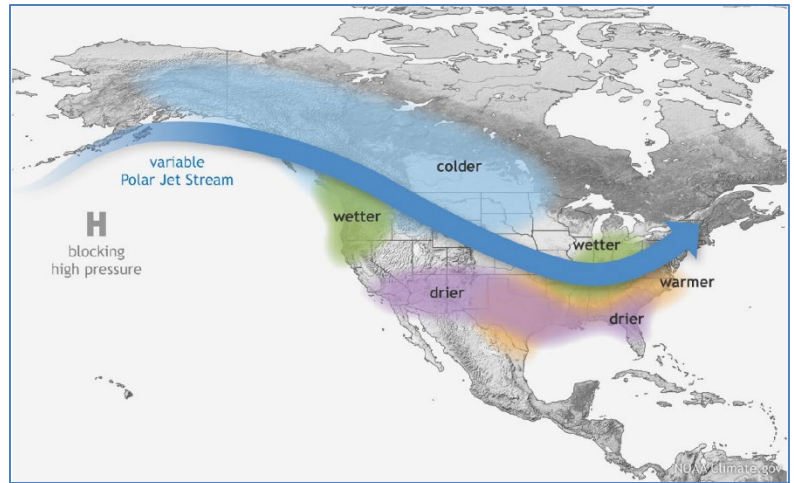


- **Seasonal Outlook:** The three-month outlook is more favorable than previous months. Equal chances of normal temperatures and equal to slightly above normal chances for average precipitation.



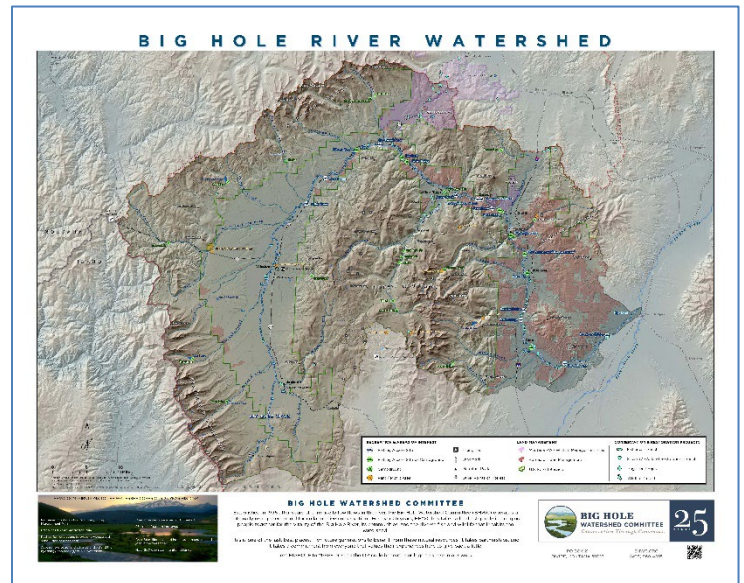
- **ENSO Alert System Status (from NOAA):** La Niña Advisory
 - **Synopsis:** La Niña is favored to continue through Northern Hemisphere winter 2022-23, with a 91% chance in September-November, decreasing to a 54% chance in January-March 2023.
 - **La Niña three-peat?** La Niña conditions are expected to persist through early winter and potentially through February and gradually transition to neutral conditions. This is only the second time a three-peat La Niña has occurred in the period of record (73 years).
 - What does this mean for the Big Hole? The answer is ... we don't know! La Niña conditions in Montana typically mean colder and wetter winters, but the past two years have not played out like that. Does this mean that the La Niña trend is changing for MT? Possibly, but until more data is available, we won't really know, it's still early to be making solid predictions for our upcoming snowpack. The general climatic trend is

showing warmer and drier conditions in general with shorter more intense storms. SW Montana has been in shortage the last couple of years especially in late summer. Current long-term predictions do not show this trend changing.



Director's Report – Pedro Marques, Executive Director

- Lots of outreach:
 - Confluence: Western Collaborative Conservation Network
 - Life in the Land film highlighted
 - American Fisheries Society
 - University of Montana
 - Water Policy
 - Ecological Restoration
 - Conflict Resolution curriculum
- Proposals:
 - RDGP planning grant – Water Storage model for storage
 - Elkhorn 30% design – engineering and mycology
- Wise River measurement
- Stream Gage Working Group report
- BHWC map – for sale for \$25 minimum donation at monthly meetings or \$30 online (includes shipping). [Get yours here!](#)
 - Proceeds support Big Hole Conservation Fund.
- Army Corps
- BLM Agreement
- Fishing regulation change proposal (more under New Business)



Steering Committee Report – Jim Hagenbarth, Vice-Chair; Roy Morris, Secretary

- The steering committee had nothing to report.

Wildlife Report – Tana Nulph, Associate Director; Jim Hagenbarth, Rancher; Dean Peterson, Rancher

- 2022 Range Rider program:
 - Funding: Livestock Loss Board, NRCS- WLA/HoTR
 - Found multiplied carasses, none confirmed on RR allotments
 - One confirmed grizzly depredation in Pioneers E. Of Jackson (not on RR allotments)

- Grizzlies, wolves, black bears, mountain lions (game cameras, tracks)
 - At least 2 separate grizzly bears (Miner Creek, Little Lake Creek)
- Warning campers and hunters about grizzly presence
- Checking wolf traps for Wildlife Services



Restoration Report – Ben LaPorte, Program Manager

- **Upper Oregon Creek:**

- September 15-21 – MWCC revegetation hitch
 - 60 coir “band-aids” installed
- September 8-11 – Helicopter fertilizer application (25 acres)
 - 1,600 lbs./acre
- “Stage 0” project complete
- Pulled perched culvert and obliterated 300 ft of road
- Up next:
 - Helicopter seeding (25 acres)
 - 16 lbs./acre
 - 70.2 acres of aspen enhancement
 - 2,700 feet of gully erosion control



- **Anaconda Uplands:**

- Completed Anaconda Uplands 2022 Performance Monitoring Report
 - EPA verification visit planned later this month
- Constructed 16 very large gully check dam structures
 - Installed in California Creek drainage (pictured above right)

- **French Gulch Fish Passage:**

- Installing 27 step-pools to allow native fish access to an additional 1.7 miles of stream. (pictured right)

- **East Pioneers LTPBR Projects:**

- Trapper Creek tributary: 30-35 structures
- Browns Gulch tributary: 30-35 structures
- UMW student volunteer day with YEP
- Wetland delineation training with GEUM Consulting

- **Other Happenings:**

- Monthly Wise River monitoring continued – one last round of data collection scheduled before winter
- MBI Elkhorn Biofiltration – installed larger, on-site pilot columns under 1,000 ft adit
- American Fisheries Society Spokane conference
- Project planning – Smith Sage Springs restoration
- Muddy Gulch – beaver took over one of our BDAs!



New Business

- Ron Breitmeyer, MBMG, discussed GWIP study on lower Melrose. GWIP needs landowners' permission from landowners in the Melrose area for sampling efforts.
- Stream Gage Working Group update: Water Policy Interim Committee (WPIC) requesting \$1 Million in the Governor's budget to support early notification process, FTEs, and stream gages.
- 2023-2024 Proposed Fishing Regulations:
 - Proposed updates for Big Hole River included as attachment at end of document.
 - See full proposed regulations here:
<https://fwp.mt.gov/binaries/content/assets/fwp/fish/2023-2024-regulations-proposed/2023-24-fishing-regs-proposals-final.pdf> (scroll to page 34 for Big Hole River).
 - ~~Official comments were due September 22nd, but feel free to send letters/emails to the FWP Fish & Wildlife Commission any time prior to their next meeting on October 20th.~~

***As of September 29th, FWP has decided to table potential regulation changes until a new statewide fisheries management plan is in place in 2023. See the attached press release from FWP.**

- ~~▪ Your comment may not make it into the official record but will still be valuable in helping the commissioners with their decision.~~
- Discussion:
 - *I (Pedro) want to get a sense of where you all stand, as a committee. If we want to put in a letter, I'm happy to do that tomorrow, whether it's piggy-backing on Montana Trout Unlimited letter or adding new language to what we think should be implemented. But first, I'm going to hand the mic over to Eric Thorson, so he can explain the regulations.*
 - *Eric Thorson: Last year, we all came together and put together a plan for the spawning closure. FWP approved it. We decided to close BLM Maidenrock to Browne's Bridge from October 1st to April 1st. The NEW proposed regulations would close Dickie Bridge to the mouth from October 1st to April 1st AND continue that closure from Dickie Bridge to Browne's Bridge through the 3rd Saturday in May. So, of the floatable river, ~40% would be closed for 8 months of the year. The idea behind it is because we've had a dramatic decrease in brown trout populations so trying to come up with ideas, so we can protect brown trout and bring them back to above the 25th percentile. Being able to do a stream closure in the spawn was something that we thought would help. FWP didn't have the data that would suggest that that would help or hurt or make a difference whatsoever, but we all decided that was a sacrifice that was worth making so we could collect data and learn about what was happening in that section. The thing about Maidenrock to Browne's Bridge is it has a high concentration of redds and also a high number of fishing accesses. So, it's very easy for wade anglers to access and trample on those redds. What they've suggested now is to close the river from Dickie Bridge all the way to the mouth, and from the people I've talked to in the fishing community – anglers, outfitters, landowners who allow access to people so they can fish – that essentially closes all of the river that's fishable during the wintertime all the way until April 1st (from Dickie Bridge up, it's more likely to be frozen in the winter). The spring closure, which I think is the most detrimental part of it, would have an extremely detrimental effect on the economy of the Big Hole Valley, recreation would not be allowed on that river in that section, and it's concerning.*

- Clayton Elliot, Montana Trout Unlimited, proposing amendment. The compromise they've come up with is to remove the spring closure on the middle section (Dickie to Browne's Bridge). I don't presume that that would resolve all of the angst around this proposal, but I think it's a compromise the fishing community could live with.
- Pedro: So, if there's specific language we want use to push for something different, we can either do it in public comment tomorrow or we can engage the commissioners directly. But I think it's going to take a little "noodling" from this group to see, Eric, where you're comfortable and where the conservation contingent of this group is comfortable. Does that sound ok?
 - Eric: I would propose keeping the same regulations that were put in place for this stretch last fall (BLM Maidenrock to Browne's Bridge, October 1st – April 1st) until FWP can collect data through sampling (electroshocking) to see if the closure has any effect on fish populations.
 - Meeting guest: This was an incredibly well thought out regulation plan by the biologists, and the plan is based on biology and abundance of trout. The decisions were made with the idea that if the abundance increased, then there would be a drop in restrictions and more time for the river to be open. It makes perfect sense to, at the very minimum, have an October 1st – April 1st closure on big sections of the river and those are the times when really, there's very little pressure and it won't have a big impact on anything, except it might protect the fishery more. I think anything short of that is really a statement against protecting the resource. When the numbers increase, then the restrictions can back off. You can also use the two sections – Dickie Bridge to Browne's – make that October 1st to April 1st, and then use your test section – Browne's to the mouth – as October 1st to 3rd Saturday in May and then you can compare to see if it really makes a difference to have that prolonged closure. Both brown trout and rainbow trout are down, so let's make every effort we can. And as Matt (Jaeger, at BHWC May monthly meeting) showed with his formula, if you can improve the spawning numbers, the populations are going to increase. I think the plan as it sits is great, a little tweaking of those dates allows you to fish all the way from April through September. If we're going to have this fishery in the future, or at least keep it close to what it is, I think it's the least we can do.
 - Board member: I don't feel informed enough on the issue to make a decision right now.
- Pedro: I suggest we let the comment period go and come together as a committee to hash this out more earnestly, whether it's through emails or a separate meeting, to get some language that we're all happy with and get more of the rationale and the science so that we all feel better informed about what's going on. The tradeoff sounds clear to me about the implications of this proposal: the businesses are fearful of the hurt that it's going to be to adhere to this closure and what it's going to do to their businesses vs. protective stance on the fish.

Break – 10 minutes

Meeting Topic: Youth Employment Program – Dillon, MT

Presented by: Nolan Salix, YEP Coordinator

- How YEP started:
 - Steve Adams started YEP in 1994 in Salmon, Idaho
 - Nonprofit organization funded by Steve Adams and the Auwen-Berger Foundation
 - Took some adjustments
 - Dillon YEP started in Dillon, Montana in 2021 and managed by Nolan Salix
- What YEP does:
 - Employ
 - Ages 14 and up
 - Crews of ~6
 - May – September
 - Volunteer
 - Family and friends
 - College students
 - Contribute
 - Stream restoration
 - Animal friendly fencing
 - Erosion control
 - Conservation
 - Inform
 - Job fairs
 - Talking to landowners
 - Resume assistance
 - Problem Solve
 - Remote areas
 - Things go wrong sometimes ...
 - Have fun!
- Who YEP works with:
 - Forest Service
 - Fish and Game
 - BLM
 - The Nature Conservancy



- Sagebrush Partnership
- FWP
- Trout Unlimited
- Private landowners/ranchers
- What YEP has done:
 - First Aid training
 - Crew leads and crew members
 - CPR/AED/First Aid certification
 - Campground work
 - Replacing firepits
 - Redoing picnic tables
 - Firewood
 - Beautification
 - Chainsaw training
 - Forest Service
 - Crew leads/assistants
 - A Sawyer, B Sawyer
 - Safety!
 - Maintenance
 - Tool maintenance
 - Loppers
 - Chainsaws
 - Cleaning
 - Sharpening
 - Willow planting
 - Restoring stream bank
 - Multiple steps, week-long process
 - 500 stakes for ¼ mile
 - Animal friendly fencing
 - Decreases number of animals (antelope, elk, etc.) hung up on fences
 - Smooth wire on top and bottom
 - Bottom wire 16-18" off ground
 - Private property
 - Cheatgrass mapping
 - GIS/Avenza/GPS
 - Noxious weed identification
 - Information used for all aerial weed spraying and other applications
 - Conifer lopping
 - Rate of encroachment
 - Sage grouse habitat
 - Water table effects
 - Line crews to sweep area
 - Zeedyk structures
 - One-rock dams
 - Rock run downs
 - Zuni bowls
 - Headcuts



- Erosion control
 - Outsourced rock
- Trail maintenance
 - CDT Bannock Pass
 - Timber Creek
 - Magpie Springs
 - Rerouting
 - Upkeep
 - Erosion control
 - Backpacking
- Beaver dam analogs
 - Post-assisted log structures
 - Brush dams
 - Water table effects
 - Erosion control
 - Undercut banks
- Bee survey
 - Forest Service
 - Educational Experience
 - Identifying native species
 - Looking for rare species
 - Pinning specimens
- Volunteer days
 - Family and friends
 - The University of Montana Western
 - BDAs
 - Zeedyks
- Magpie Springs
 - Earthship
 - The Wall
 - Cement work
 - Filling tires
 - Recycling bottles and cans
- Selway project
 - Westslope cutthroat trout
 - Rotenone drip
 - Mussel survey
- Benefits of working for YEP:
 - Crew members finish the summer with:
 - Job experience
 - Outdoor education
 - Work ethic
 - Future goals
 - Crew leads finish the summer with:
 - Resumes
 - Jobs
 - New skills

- Leadership experience

Upcoming Meetings

- October 19, 2022: **Sage Grouse and Wildlife Update by Montana Fish, Wildlife and Parks**
 - 7:00 pm at the Divide Grange/Zoom

Adjourn

This proposal combines suggestions from two public proposals.

A letter with regulation proposals was sent to the Fish and Wildlife Commission from 23 individuals on the respective boards of the Beaverhead Conservation District, Ruby Valley Conservation District, and the Joint Irrigation Board for Clark Canyon Reservoir and Beaverhead River requesting that standard Central District gear and harvest regulations be reinstated on the entire the Beaverhead River because FWP data showed average to above average abundances of brown trout in the upper 17 miles that was managed under standard Central District regulations until last fall. They indicated recently enacted restrictive regulations primarily affected “resident Montana anglers, especially local families in Beaverhead and western Madison counties that the petitioners represent and is contrary to how the petitioners manage (Beaverhead River) habitat for the angling public.”

The regulation proposal was presented to these organizations during scoping. Each group stated the management strategies addressed their concerns (i.e., regulations would be based on trout abundances and biology) and supported the proposed regulations, even though they were more restrictive than what was requested in their petition.

Fishing Outfitters Association of Montana submitted a public regulation proposal following the same rationale as outlined in this proposal.

PROPOSAL #25: Big Hole River, Region 3

Page 56 change:

BIG HOLE RIVER

Entire River

- Catch-and-release for Arctic Grayling

Headwaters to Dickie Bridge

- Combined trout: 5 daily and in possession, no size restriction

Dickie Bridge to ~~BLM Maiden Rock~~ Brownes Bridge FAS

- Catch and release for Rainbow trout December 1 to third Saturday in May.
- Brown Trout: Catch-and-release only.
- Combined trout: 1 daily and in possession, all must be less than 18".
- Artificial lures only. lures and single-pointed hooks only. No treble or double hooks. Anglers may remove treble or double hoods from the lure and replace them with a single hook, or the shanks may be cut off the other hook points to leave a single hook. Lures with multiple hook attachments may still be used but any treble hook must be replaced by a single hook.
- Open third Saturday in May through September 30.

BLM Maiden Rock to Brownes Bridge FAS

- Open April 1 through September 30.
- Brown Trout: Catch-and-release only.

- *Artificial lures and single-pointed hooks only. No treble or double hooks. Anglers may remove treble or double hoods from the lure and replace them with a single hook, or the shanks may be cut off the other hook points to leave a single hook. Lures with multiple hook attachments may still be used but any treble hook must be replaced by a single hook.*

Brownes Bridge FAS to the mouth

- Catch and release for Rainbow trout December 1 to third Saturday in May.
- Brown Trout: Catch and release only.
- *Artificial lures and single-pointed hooks only. No treble or double hooks. Anglers may remove treble or double hoods from the lure and replace them with a single hook, or the shanks may be cut off the other hook points to leave a single hook. Lures with multiple hook attachments may still be used but any treble hook must be replaced by a single hook.*
- *Combined trout: 1 daily and in possession, all must be less than 18".*
- *Open April 1 through September 30.*

Rationale (biological justification for proposing this change. Include how this change addresses a fisheries management problem):

The proposed regulation changes are directly responsive to the biology and abundance of trout populations in the Big Hole River. Regulations were changed in the middle and lower portions of the Big Hole River in fall 2021 in response to low brown trout abundances resulting in restrictive regulations that reduced angler opportunity and harvest. The following is the biological rationale for the regulation changes given the current trout population abundance in these sections of the river:

- Combined trout harvest is proposed to only include 1 fish less than 18". Current trout abundance, particularly brown trout abundance, is below long-term averages in this reach of river. A 1 trout limit restricts harvest adequately to limit angler impacts on the fish population. The under 18-inch size requirement protects age 4 and older fish allowing harvest primarily on smaller, pre-spawning age classes.
- Dickie Bridge to Brownes Bridge FAS: artificial lures only. This section has been artificial lures only since the mid-1980s. The public has been supportive of keeping these regulations in place. Having a section of the river remain artificial lures only also allows the evaluation of fish mortality compared to the section downstream which has no gear restrictions.
- Dickie Bridge to Brownes Bridge FAS: open from third Saturday in May through September 30. Trout abundance within this section is well below long-term average. The public has been very supportive of the spawning closure on the Big Hole River implemented in 2021 in response to declining brown trout numbers. This change expands the geographic range of the current spawning closure and adjusts the timing of the closure to include the rainbow trout spawn in the spring. The department believes spawning closures are appropriate for both rainbow trout and brown trout due to low abundance of both species. When fish population numbers increase to near long-term average, this restriction would be reassessed and less restrictive regulations will be considered.

- Brownes Bridge FAS to the mouth: open from April 1 through September 30. Combined brown and rainbow trout abundance in this section is below long-term average. However, the spawning closure on this lowest section of the river would only cover the spawning and egg incubation time for brown trout. This section of the river suffers from dewatering in the late summer and often experiences drought related hoot-owl or full fishing closures in late July and August. Anglers expressed concern that having the fishing season closed in the spring would lead to an extremely truncated fishing season. Further, the rainbow trout abundance in this section of the river is only slightly below the long-term average and trending upward. Having a variable spawning closure among reaches of the river will also allow FWP to evaluate the effectiveness of the rainbow trout spawning closure over the next 4 years. If the fish population recovers more quickly in upper section, a similar spawning closer could be enacted on the lower reach of the river. If there is no difference in the rate at which fish populations recover between the reaches, the rainbow trout spawning closure in the middle section of the river could be removed.

Population monitoring will continue on these waters and any future department regulation proposals will be made based on biological data.

Regulation Type (clarification, enforcement, conservation, relevancy, management plan, other):

Conservation: sport fish conservation.

Public Engagement (summary of any public scoping or outreach that has been completed as it relates to this change. Includes public meetings, sporting group meetings, surveys, etc.):

The proposed regulation changes were scoped during meetings with the Region 3 Citizens Advisory Council, George Grant Trout Unlimited, Chuck Robbins Trout Unlimited, Skyline Sportsmen Association, Anaconda Sportsmen Club, Beaverhead Outdoors Association, Fishing Outfitters Association of Montana, Montana Trout Unlimited, Big Hole Watershed Committee, Beaverhead Watershed Committee, Big Hole River Foundation, Ruby Valley Strategic Alliance, Ruby Valley Conservation District, Beaverhead Conservation District, Mile High Conservation District, Clark Canyon Joint irrigation Board, and the Ruby Valley Water Users Association, which encompassed between 100 and 200 individuals and included state legislators and county commissioners.

The regulation proposals were well supported during all public meetings. Each group stated the management strategies addressed their concerns (i.e., regulations would be based on trout abundances and biology) and supported the proposed regulations. The public also generally supported implementing less restrictive fishing regulations when the population improves and abundance increases to levels near long-term averages.

Fishing Outfitters Association of Montana and one individual submitted a public regulation proposal following the same rationale as outlined in this proposal.

Interdivisional Review (most likely input from Enforcement, but input from CommEd, Legal, Wildlife may also be appropriate. Multiple divisions will review in Helena via RRAM):

[BUY AND APPLY \(/BUYANDAPPLY\)](#)[HUNT \(/hunt\)](#) [FISH \(/fish\)](#) [STATE PARKS \(/stateparks\)](#) [ACTIVITIES \(/activities\)](#) [CONSERVATION \(/conservation\)](#) [EDUCATION \(/educati](#)

FISHING REGULATION PROPOSALS REMOVED FROM OCTOBER FISH AND WILDLIFE COMMISSION MEETING

Sep 29, 2022 4:09 PM

HELENA – Proposed changes to the Montana fishing regulations will not be on the Fish and Wildlife Commission meeting agenda for October as originally planned. Instead, potential regulation changes will wait until a new statewide fisheries management plan is in place in 2023.

After reviewing public comment received on the proposed regulations and considering the ongoing revision of the statewide fisheries plan, Montana Fish, Wildlife & Parks determined that the plan should be completed first to inform regulation changes.

The proposed fishing regulations were out for review from Aug 26.-Sept. 22, 2022 and were planned to go before the commission at their Oct. 20 meeting for final adoption. Several of the proposed changes are based on criteria that will be detailed in the revised fisheries management plan.

FWP fisheries staff are working on the management plan now and it will go out for public comment in December. The department will use the public input for the management plan to determine if adjusting fisheries management strategies for some waterbodies is needed. The plan, when finalized, will then help to inform proposals for the 2024 fishing regulations and beyond.

The commission will consider extending the 2022 fishing regulations into 2023 at its Oct 20 meeting. Changes to the fishing regulations will be considered after the revised management plan is adopted in early 2023.

-fwp-

[BUY AND APPLY \(/BUYANDAPPLY\)](#)[REPORT A VIOLATION \(/ABOUTFWP/ENFORCEMENT\)](#)

MYFWP LOGIN  ([HTTPS://MYFWP.MT.GOV/FWPEXTPORTAL/LOGIN/LOGIN.JSP](https://myfwp.mt.gov/fwpextportal/login/login.jsp))

[MYFWP MOBILE APP \(/MYFWPAPP\)](#)

[ABOUT FWP \(/ABOUTFWP\)](#)

[MONTANA OUTDOORS MAGAZINE \(/MONTANA-OUTDOORS\)](#)

[CONTACT FWP \(/ABOUTFWP/CONTACT-US\)](#)

[EMPLOYMENT \(/ABOUTFWP/EMPLOYMENT\)](#)

[VOLUNTEER OPPORTUNITIES \(/ABOUTFWP/EMPLOYMENT\)](#)

[HUNT \(/HUNT\)](#)

[FISH \(/FISH\)](#)

[STATE PARKS \(/STATEPARKS\)](#)